

New data sheets for our high strength quenched and tempered fine grained structural steel DILLIMAX

New, enhanced plate thickness:

- DILLIMAX 500 B, DILLIMAX 550 B up to 200 mm
- DILLIMAX 690 B,T up to 255 mm
- DILLIMAX 965 up to 120 mm

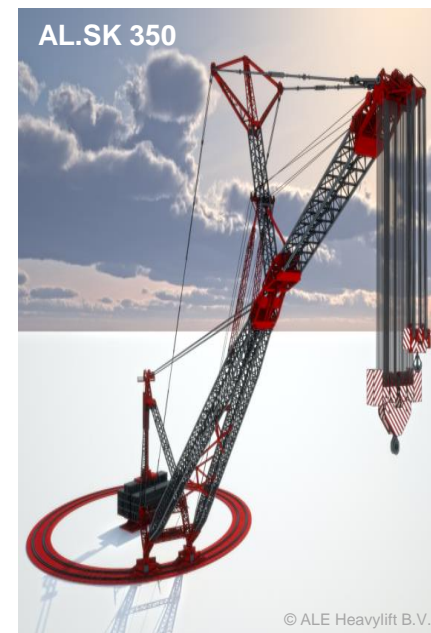
Ultra cleanliness guaranteed: P ≤ 0.018% and S ≤ 0.005%

Ultrasonic class S₁E₁ is included

Higher toughness level for DILLIMAX 690 B,T in thickness up to 120 mm guaranteed:

- Impact energy KV2 (long./transv.): 60 J/40 J at -20 °C and at -40 °C

Low guaranteed carbon equivalents for reliable, crack-free and economic welding



	Minimum yield strength [MPa] (ksi)	Charpy impact energy at [°C] (°F)	Thickness [mm] (in.)	EN 10025 Designation
DILLIMAX 1100	1100 (160)	-40 (-40)	8-40 (0.3 to 1.6)	k.A.
DILLIMAX 965 B/T/E	960 (140)	B / T / E -20/-40/-60 (-4/-40/-76)	6-120 (0.25 to 4)	S960Q/QL/n.a.
DILLIMAX 890 B/T/E	890 (130)			S890Q/QL/QL1
DILLIMAX 690 B/T/E	690 (100)		6-255* (0.3 to 10)	S690Q/QL/QL1
DILLIMAX 550 B/T/E	550 (80)		6-200** (0.3 to 6)	S550Q/QL/QL1
DILLIMAX 500 B/T/E	500 (72)			S500Q/QL/QL1

* DILLIMAX 690 E: 6 - 200 mm (0.25 - 8 in.)

** DILLIMAX 500 T/E and DILLIMAX 550 T/E: 6 - 150 mm (0.25 - 8 in.)

Your contact:
 Wolfram Hölbling
 Tel.: +49 6831 47 4708
Wolfram.Hoelbling@dillinger.biz